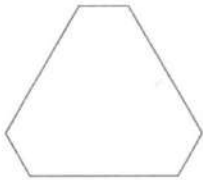


Answer **all** the questions.

- 1 (a) Write down the mathematical name of this polygon.



(a) hexagon ✓ [1]

- (b) Write down the order of rotation symmetry of the polygon.

(b) 3 ✓ [1]

- 2 (a) Write down each of the following.

(i) An odd number.

(i) 1 ✓ [1]

(ii) A factor of 25.

(ii) 1 or 5 or 25 ✓ [1]

(iii) A prime number between 20 and 30.

(iii) 23 / 29 ✓ [1]

- (b) Show that 55 is **not** a square number.

55 is between 7² = 49 and 8² = 64 ✓ [2]

- 3 Complete this table of fractions, decimals and percentages.

Fraction	Decimal	Percentage
$\frac{1}{4}$	= 0.25	= 25%
$\frac{7}{100}$	= 0.07	= 7%
$\frac{13}{10}$	= 1.3	= 130%

✓
✓
✓

- 4 Here are the first four terms of a sequence.

3 8 13 18

- (a) (i) Write down the next term of the sequence.

(a)(i) 23 ✓ [1]

- (ii) Explain how you worked out your answer.

add 5 ✓ [1]

- (b) Explain why 534 is **not** a term in this sequence.

All terms end with 3 or 8 ✓ [1]

OCR-F Jun'19 P11

5 Lev (L), Maria (M) and Nicholas (N) sit in a row of three seats.

- (a) Use the table to list all the different orders in which they could sit. One possible order is already shown in the table. You may not need to use all the rows in the table.

Seat 1	Seat 2	Seat 3
L	M	N
L	N	M
M	L	N
M	N	L
N	M	L
N	L	M

✓
✓

[2]

- (b) All possible orders in which they could sit are equally likely.

What is the probability that Lev (L) sits next to Maria (M)?

$\frac{4}{6}$ or $\frac{2}{3}$ ✓

(b) [1]

6 (a) Multiply out.

$4(3x + 2)$

$12x + 8$ ✓

(a) [1]

(b) Factorise.

$3c - 6d$

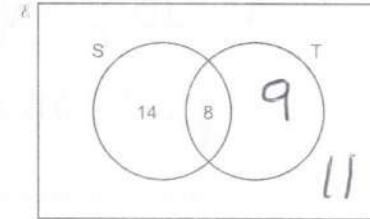
$3(c - 2d)$ ✓

(b) [1]

7 A survey asked whether some students went swimming (S) or played tennis (T) last month.

- 17 played tennis.
- 11 did not go swimming and did not play tennis.
- 22 went swimming.
- 8 went swimming and played tennis.

Some of this information is shown on the Venn diagram below.



✓
✓

How many students were in the survey?

42 ✓

[3]

8 Kim is paid £9.40 per hour for the first 35 hours she works each week. After 35 hours she is paid at one and a quarter times the hourly rate.

One week Kim works 42 hours.

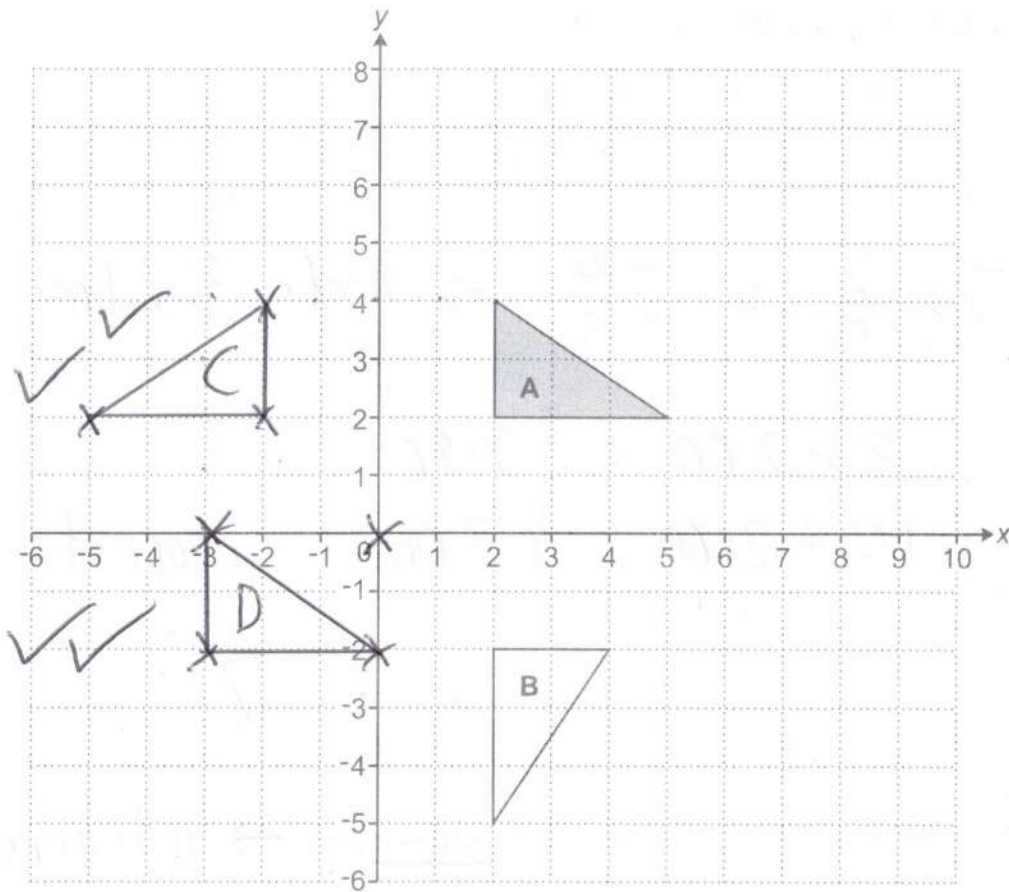
Calculate how much she is paid for that week.

$9.4 \times 35 = 329$ ✓
 $7 \times 9.4 \times 1.25 = 82.25$ ✓
 + ✓

£ 411.25 ✓

[6]

11 Triangles **A** and **B** are drawn on the coordinate grid.



(a) Describe fully the **single** transformation that maps triangle **A** onto triangle **B**.

Rotation 90° clockwise about $(0,0)$

✓ ✓ ✓ [3]

(b) (i) On the grid, reflect triangle **A** in the line $x = 0$. \rightarrow y -axis

Label the image **C**.

[2]

(ii) On the grid, translate triangle **A** by vector $\begin{pmatrix} -5 \\ -4 \end{pmatrix}$.

Label the image **D**.

Left 5
Down 4

[2]

- 12 Jack and Alex take rubbish to be recycled.
Jack takes 520 kilograms, 87% of which can be recycled.
Alex takes 750 kilograms, 61% of which can be recycled.

Calculate who takes the greatest amount of rubbish that can be recycled and by how much.

$$\textcircled{J} \quad 520 \times 0.87 = 452.4 \quad \checkmark$$

$$\textcircled{A} \quad 750 \times 0.61 = 457.5 \quad \checkmark$$

$$\underline{\underline{5.1}}$$

Alex by 5.1 kg [3] ✓

- 13 Calculate the area of a circle with radius 14 cm.

$$\pi \times 14^2 = 615.752 \dots \quad \checkmark$$

$$= 615.8 \quad \checkmark$$

cm² [2]

- 14 (a) (i) Round 356 to the nearest ten.

$$35\textcircled{6}$$

(a)(i) 360 ✓ [1]

- (ii) Round 356.052 to 1 decimal place.

$$356.\textcircled{0}52$$

(ii) 356.1 ✓ [1]

- (b) Find the value of y in each of the following.

(i) $3 \times 3 \times 3 \times 3 = 3^y$

(b)(i) $y = 4$ ✓ [1]

(ii) $6^3 \times 6^5 = 6^y$

(ii) $y = 8$ ✓ [1]

$$3+5$$

15 Anna and Paddy take part in the same fun run.

Anna completed the fun run in 2 hours.
Her average speed was 6 kilometres per hour.
Paddy completed the fun run in 90 minutes. = 1.5 hrs



(a) Work out Paddy's average speed in kilometres per hour.

(A) $D = 2 \times 6 = 12 \text{ km}$

(P) $S = \frac{D}{T} = \frac{12}{1.5}$

(a) 8 km/h [4]

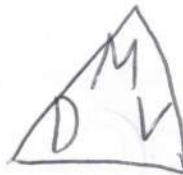
(b) Anna says

Because I stopped for drinks, my average running speed was faster than 6 kilometres per hour.

Give one reason to support Anna's statement.

Actual running time will be lower etc [1]

16 The volume of a piece of wood is 620 cm^3 .
Its density is 0.85 g/cm^3 .



Work out its mass.

$M = D \times V$
 $= 0.85 \times 620$

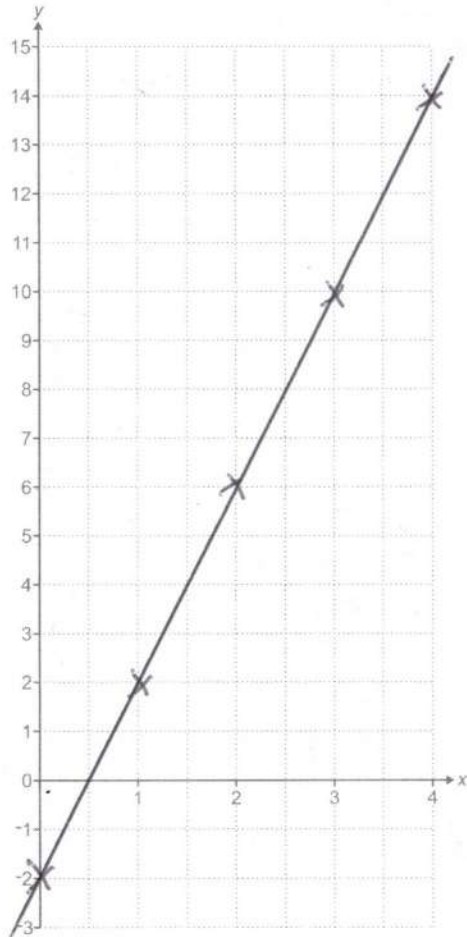
..... 527 g [2]

17 (a) Complete this table for $y = 4x - 2$.

x	0	1	2	3	4
y	-2	2	6	10	14

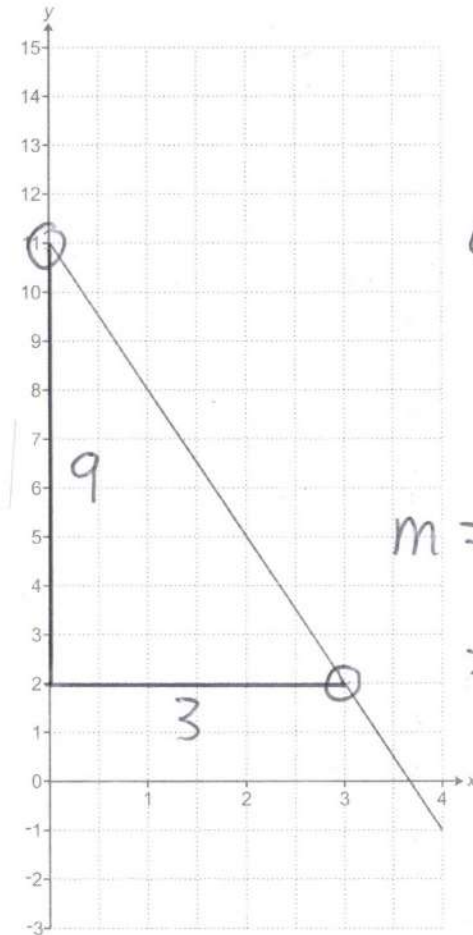
[1]

(b) On the grid below, draw the graph of $y = 4x - 2$ for values of x from 0 to 4.



[2]

(c) The diagram below shows part of another straight line.

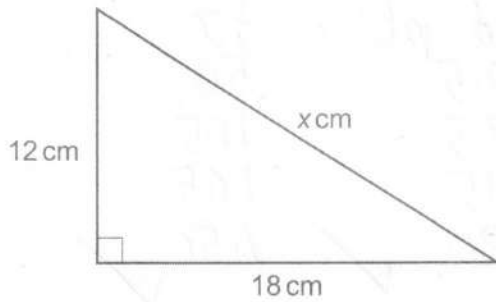


Find the equation of this straight line.

(c) $y = -3x + 11$ [3]

Turn over

- 18 Here is a right-angled triangle.



Not to scale

Work out the value of x .

$$\begin{aligned} x &= \sqrt{12^2 + 18^2} \\ &= \sqrt{468} \\ &= 21.633... \end{aligned}$$

$x = \dots\dots\dots$ [3]

$$21.6$$

$$(6\sqrt{13})$$

- 19 (a) Anne, Barry and Colin share a prize in the ratio 3 : 4 : 5.
Colin gives $\frac{1}{3}$ of his share to a charity.

What fraction of the whole prize does Colin give to the charity?

$$C = \frac{5}{12} \times \frac{1}{3}$$

(a) $\dots\dots\dots$ [3]

$$\frac{5}{36}$$

- (b) Delia, Edwin and Freya share some money in the ratio 5 : 7 : 8.
Freya's share is £1600.

$$1600 \div 8 = 200$$

How much money did they share?

$$(5 + 7 + 8) \times 200$$

(b) £ $\dots\dots\dots$ [2]

$$4000$$

20 Luke is an office receptionist.

Each day, for 60 days, he records the number of people visiting the office.

Number of people, (n)	Frequency	mid pt	fx
$0 \leq n \leq 5$	20	2.5	50
$5 < n \leq 10$	14	7.5	105
$10 < n \leq 20$	11	15	165
$20 < n \leq 40$	15	30	450

(a) Calculate an estimate of the mean number of people visiting the office.

$$770 \div 60 = 12.8\bar{3}$$

(a) 12.8 ✓ [4]

(b) Luke says the range is 40.

Explain why he may be wrong.

or Highest may not be 40 ✓
 Lowest may not be 0 [1]

$$\begin{array}{l} T+I = 5011 \\ AO = 2 \end{array}$$

- 21 James and Elizabeth buy some clothes.

James buys 5 shirts and 4 jumpers. He pays £163.
Elizabeth buys 3 shirts and 2 jumpers. She pays £89.

Assume that each shirt has the same cost and that each jumper has the same cost.

Work out the cost of one shirt and the cost of one jumper.
You must show your working.

$$5s + 4j = 163$$

$$3s + 2j = 89$$

(x2)

$$6s + 4j = 178$$

$$- 5s + 4j = 163$$

$$\hline 1s = 15$$

(E) $45 + 2j = 89$

$$2j = 44$$

Cost of one shirt £

15 ✓

Cost of one jumper £

22 ✓

[5]

- 22 Claudia invests £25 000 at a rate of 2% per year compound interest.

Calculate the total amount of interest she will have earned after 5 years.
Give your answer correct to the nearest penny.

$$(25000 \times 1.02^5) - 25000$$

$$= 2602.020...$$

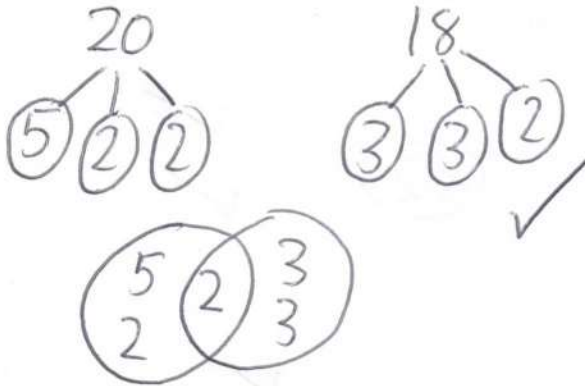
$$2602.02$$

£ [4]

23 A bus timetable shows the following information.

- A bus following route T leaves for the train station every 20 minutes.
- A bus following route A leaves for the airport every 18 minutes.
- A bus following route T and a bus following route A both leave at 8.37 am.

(a) When is the next time one of each bus is timetabled to leave at the same time?



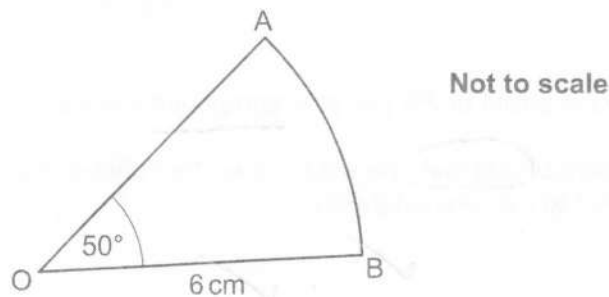
$$\begin{aligned} \text{LCM} &= 5 \times 3^2 \times 2^2 \\ &= 180 \text{ mins } \checkmark \\ &= 3 \text{ hrs } \checkmark \end{aligned}$$

(a) 11:37 am \checkmark [4]

(b) Write down one assumption that was necessary to solve this problem.

No delays etc \checkmark [1]

24 AOB is a sector of a circle, centre O.



Show that the length of arc AB is 5.24 cm, correct to 3 significant figures. [3]

$$\begin{aligned} \text{arc} &= 2 \times \pi \times 6 \times \frac{50}{360} \checkmark \\ &= 5.23598... \checkmark \\ &= 5.24 \text{ cm} \end{aligned}$$

- 25 Bennie is 7 years older than Ayesha.
Chloe is twice as old as Bennie.
The sum of their three ages is 57.

Work out the ages of Ayesha, Bennie and Chloe.

A	B	C	
x	$x+7$	$2x+14$	✓
$4x + 21 = 57$			✓
$4x$	$= 36$		✓
x	$= 9$		
Ayesha's age is			9 ✓
Bennie's age is			16 ✓
Chloe's age is			32 ✓

[6]

END OF QUESTION PAPER

OCR

Oxford Cambridge and RSA

Copyright Information

OCR is committed to seeking permission to reproduce all third-party content that it uses in its assessment materials. OCR has attempted to identify and contact all copyright holders whose work is used in this paper. To avoid the issue of disclosure of answer-related information to candidates, all copyright acknowledgements are reproduced in the OCR Copyright Acknowledgements Booklet. This is produced for each series of examinations and is freely available to download from our public website (www.ocr.org.uk) after the live examination series.

If OCR has unwittingly failed to correctly acknowledge or clear any third-party content in this assessment material, OCR will be happy to correct its mistake at the earliest possible opportunity.

For queries or further information please contact The OCR Copyright Team, The Triangle Building, Shaftesbury Road, Cambridge CB2 8EA.

OCR is part of the Cambridge Assessment Group; Cambridge Assessment is the brand name of University of Cambridge Local Examinations Syndicate (UCLES), which is itself a department of the University of Cambridge.