

OCR-F

Nov' 23

2-NC

2

1 Work out.

(a) 45×100

4500



(a) [1]

(b) $37 \div 100$

0.37



(b) [1]

(c) $2.36 + 1.79$

$$\begin{array}{r} 2.36 \\ + 1.79 \\ \hline 4.15 \end{array}$$

4.15



(c) [1]

(d) $0.82 - 0.36$

$$\begin{array}{r} 7 \\ 0.82 \\ - 0.36 \\ \hline 0.46 \end{array}$$

0.46



(d) [1]

- 2 (a) (i) Write down 50% of 80.

$$80 \div 2 = 40 \quad \checkmark$$

(a)(i) [1]

- (ii) Use your answer to part (a)(i) to complete this statement.

50% of 80 is the same as 25 % of 160 \checkmark [1]

- (b) Write 36 as a fraction of 120.
Give your answer in its simplest form.

$$\frac{36}{120} = \frac{6}{20} \quad \checkmark$$

$$= \frac{3}{10} \quad \checkmark$$

(b) [2]

- 3 (a) Work out.

$$\frac{2}{3} + \frac{2}{3}$$

Give your answer as a mixed number.

$$= \frac{4}{3} \quad \checkmark$$

$$1\frac{1}{3} \quad \checkmark$$

(a) [2]

- (b) Work out.

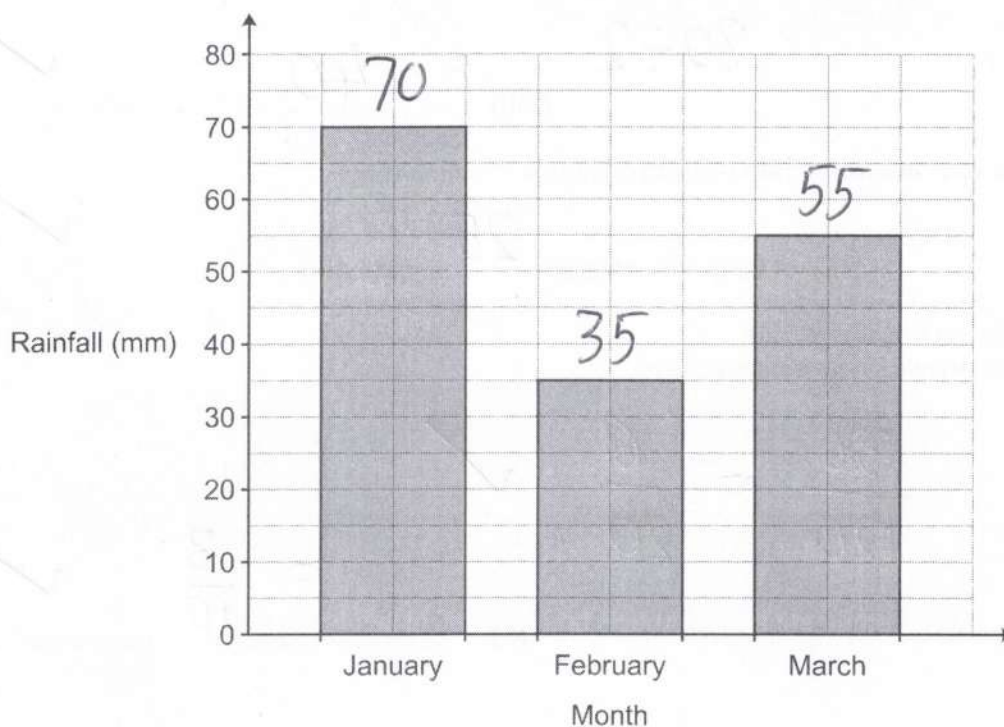
$$\frac{1}{4} \div \frac{1}{8}$$

$$\frac{1}{4} \times \frac{8}{1} = \frac{8}{4} \quad \checkmark$$

$$2 \quad \checkmark$$

(b) [2]

- 4 The bar chart shows the rainfall, in millimetres (mm), for a city in the first three months of the year.



- (a) Write down the amount of rainfall in February.

(a) 35 mm [1] ✓

- (b) Write in its simplest form the ratio
amount of rainfall in February : amount of rainfall in March.

35 : 55 ✓

(b) 7 : 11 [2] ✓

- (c) The total amount of rainfall in January and February was the same as the total amount of rainfall in March and April.

Work out the amount of rainfall in April.

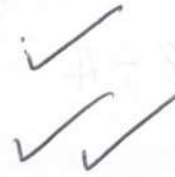
$$70 + 35 = 55 + ?$$

$$? = 105 - 55$$

(c) = 50 mm [3] ✓

- 5 Complete the three missing values on this multiplication grid.

x	-5	9
-4	20	-36
-6	30	-54



[3]

- 6 Three adults, Amos, Beth and Charlie, are comparing their age in years.

Amos is 32.

Beth is 48.

The mean age of Amos, Beth and Charlie is 50.

Work out the age of Charlie.

$$\begin{aligned} \text{Total} &= 50 \times 3 \\ &= 150 \quad \checkmark \end{aligned}$$

$$\begin{aligned} C &= 150 - 48 - 32 \\ &= 150 - 80 \end{aligned}$$

$$\begin{aligned} &= 70 \quad \checkmark \end{aligned}$$

[3]

- 7 Which is smaller, 65% or $\frac{16}{25}$?

Show your working and give a reason for your answer.

$$\frac{16}{25} = \frac{64}{100} = 64\%$$



$$\frac{16}{25} \quad \checkmark$$

$$64 < 65$$

..... is smaller because

[3]

8 Complete each statement.

(a)

$$24.2 \div 0.5 = \dots\dots\dots$$

48.4 ✓

[1]

(b)

$$\dots\dots\dots \times 4 = 12.08$$

3.02 ✓✓

[2]

$$12.08 \div 4$$

9 (a) Four apples cost £1.80.

Find the cost of five of these apples.

$$4 \overline{) 1.80} \begin{array}{r} 0.45 \\ \underline{1.80} \\ 0 \end{array}$$

✓

$$\begin{array}{r} 45 \\ \times 25 \\ \hline 225 \end{array}$$

(a) £ 2.25 ✓ [2]

(b) By rounding each value to **one** significant figure, estimate the cost of 8.2 kg of bananas at 73p per kg.
Give your answer in pounds.

$$8 \times 70 = 560p$$

✓ ✓

(b) £ 5.60 ✓ [3]

10 Choose a word from this list which best describes each statement.

Equation Expression Formula Inequality Term

(a) $2b + 2w$

(a) Expression [1] ✓

(b) $\pi r^2 = 30$

(b) Equation [1] ✓

11 A bag contains only red, green and blue counters.

- 8 of the counters are red.
- 15 of the counters are green.
- The rest of the counters are blue.

Sam chooses one counter at random from the bag.

The probability that this is a green counter is $\frac{3}{8}$.

Work out the number of blue counters in the bag.

R	G	B
8	15	x

$$\frac{15}{x+23} = \frac{3}{8}$$

$$120 = 3x + 69$$

$$51 = 3x$$

$$17 = x$$

✓✓

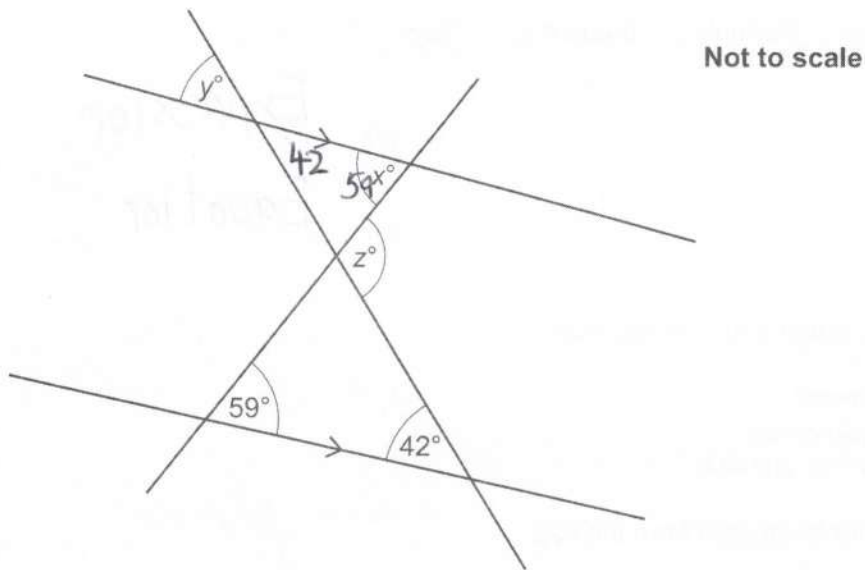
✓

17

✓

..... [4]

- 12 The diagram shows two straight lines crossing a pair of parallel lines.



- (a) (i) Find the value of x .

Give a geometrical reason for your answer.

✓ $x = 59$ because alternate angles are equal ✓ [2]

- (ii) Find the value of y .

Give a geometrical reason for your answer.

✓ $y = 42$ because corresponding angles are equal ✓ [2]

- (b) Find the value of z .

✓ $59 + 42 = 101$

(b) $z = 101$ ✓ [2]

13 (a) Work out.

$$3^4 = 3 \times 3 \times 3 \times 3 \quad \checkmark$$

$$= 9 \times 9$$

(a) [2]

(b) Simplify.

$$\frac{5x^2}{x}$$

(b) [1]

(c) Rearrange this formula to make x the subject.

$$y = \frac{x}{5} + 2$$

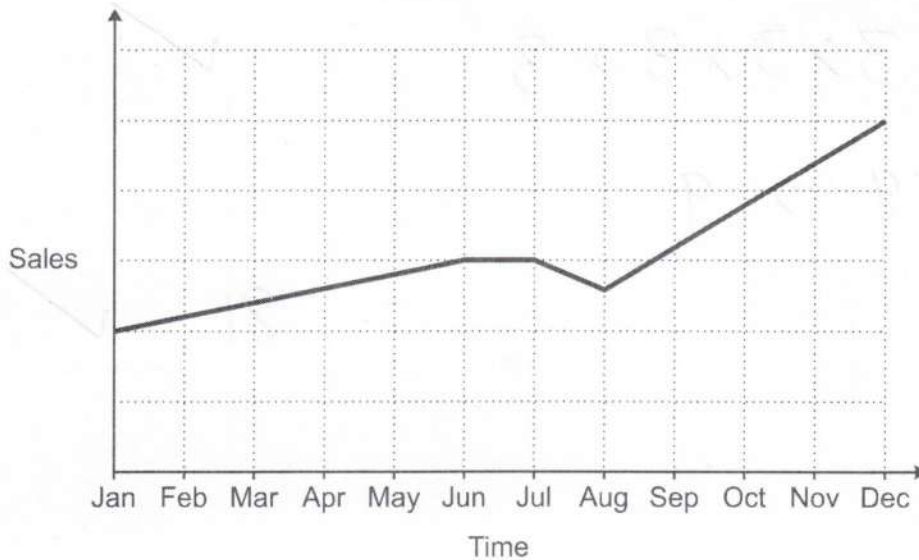
$$y - 2 = \frac{x}{5} \quad \checkmark$$

$$x = 5(y - 2) \quad \checkmark$$

(c) [2]

$$\text{or } 5y - 10$$

- 14 A sales representative and a manager discuss this graph of sales over the last year.



- (a) The sales representative says

I can tell from the graph that, over the last year, sales have risen every month.

Is the sales representative correct?

Give a reason for your answer.

NO because graph isn't rising between Jun → Aug [1]

- (b) The manager says

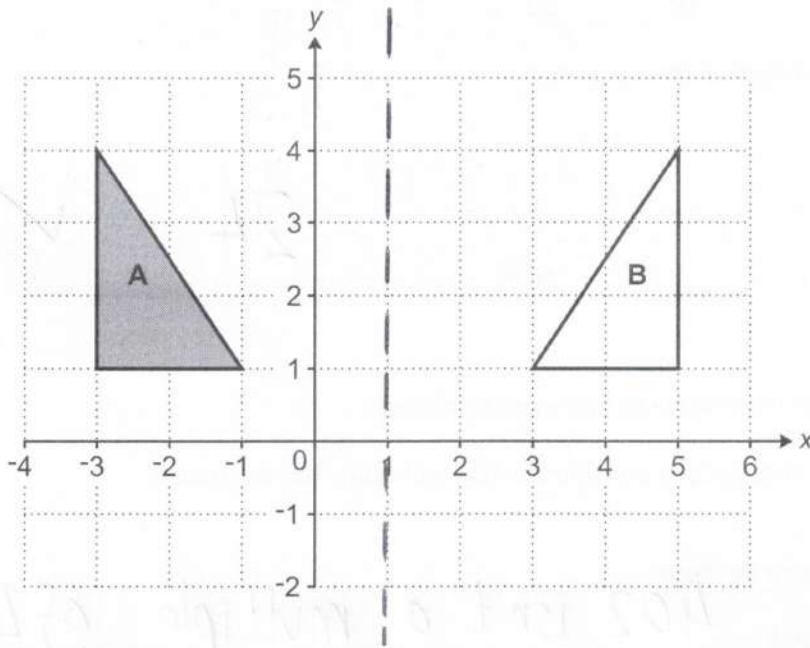
I can tell from the graph that sales are now more than double what they were at the start of the year.

Is the manager correct?

Give a reason for your answer.

NO because y-axis has no labelling so is impossible to tell [1]

15 Triangle **A** and triangle **B** are drawn on the coordinate grid.



Describe fully the **single** transformation that maps triangle **A** onto triangle **B**.

reflection in $x = 1$

[2]

16 (a) Here are the first five terms of a sequence.

4 8 12 16 20

(i) Write down the next term of the sequence.

(a)(i) 24 ✓ [1]

(ii) Kai says

All of the terms in the sequence are even numbers.

402 is an even number.

Therefore, if the sequence is continued, 402 will be in the sequence.

Is Kai correct?

Give a reason for your decision.

..... No because 402 isn't a multiple of 4 [1]

(b) Here are the first five terms of another sequence.

0.25 0.5 1 2 4

(i) Write down the next term of the sequence.

(b)(i) 8 ✓ [1]


(ii) Explain how you worked out your answer.

..... Doubles each time ✓
..... (oe) [1]

- 17 A motorist wants to buy a new car but does not have enough money.

The price of the car is £16000.

The motorist sees this notice for a deal on the car they want to buy.
The number of equal monthly payments is hidden.



Pay 15% of the price of the car now
and then
equal monthly payments of £300

Work out the number of monthly payments if the total cost of the car to the motorist is £17400.
You must show your working.

$$10\% = 1600 \quad \checkmark$$

$$5\% = 800 \quad \checkmark$$

$$15\% = 2400 \quad \checkmark$$

$$\begin{array}{r} 17400 \\ - 2400 \\ \hline \pounds 15000 \text{ left} \end{array}$$

$$\frac{15000}{300} = \frac{150}{3} \quad \checkmark$$

50

..... [4] ✓

- 18 A box contains only red, green and black pens.
The ratio of red pens to green pens to black pens is 1 : 4 : 11.

(a) Work out the percentage of the pens that are green.

$$\frac{4}{16} = \frac{1}{4}$$

25 ✓

(a)% [2]

(b) There are 24 more green pens than red pens.

Work out the total number of pens in the box.

R	G	B
1	4	11
$\underbrace{\hspace{2em}}_{+3}$		

$$\textcircled{\times 8} \quad \checkmark$$

$\underbrace{\hspace{2em}}_{+24}$		
8	32	88

$$\checkmark \checkmark$$

$$88 + 32 + 8$$

$$= 128 \quad \checkmark$$

(b) [4]

- 19 A solid wooden block has a volume of 900 cm^3 .
The density of the wood is 0.7 g/cm^3 .

Calculate the mass of the wooden block.
Give the units of your answer.



$$M = D \times V$$

$$= 900 \times 0.7 \quad \checkmark$$

$$= 90 \times 7$$

630

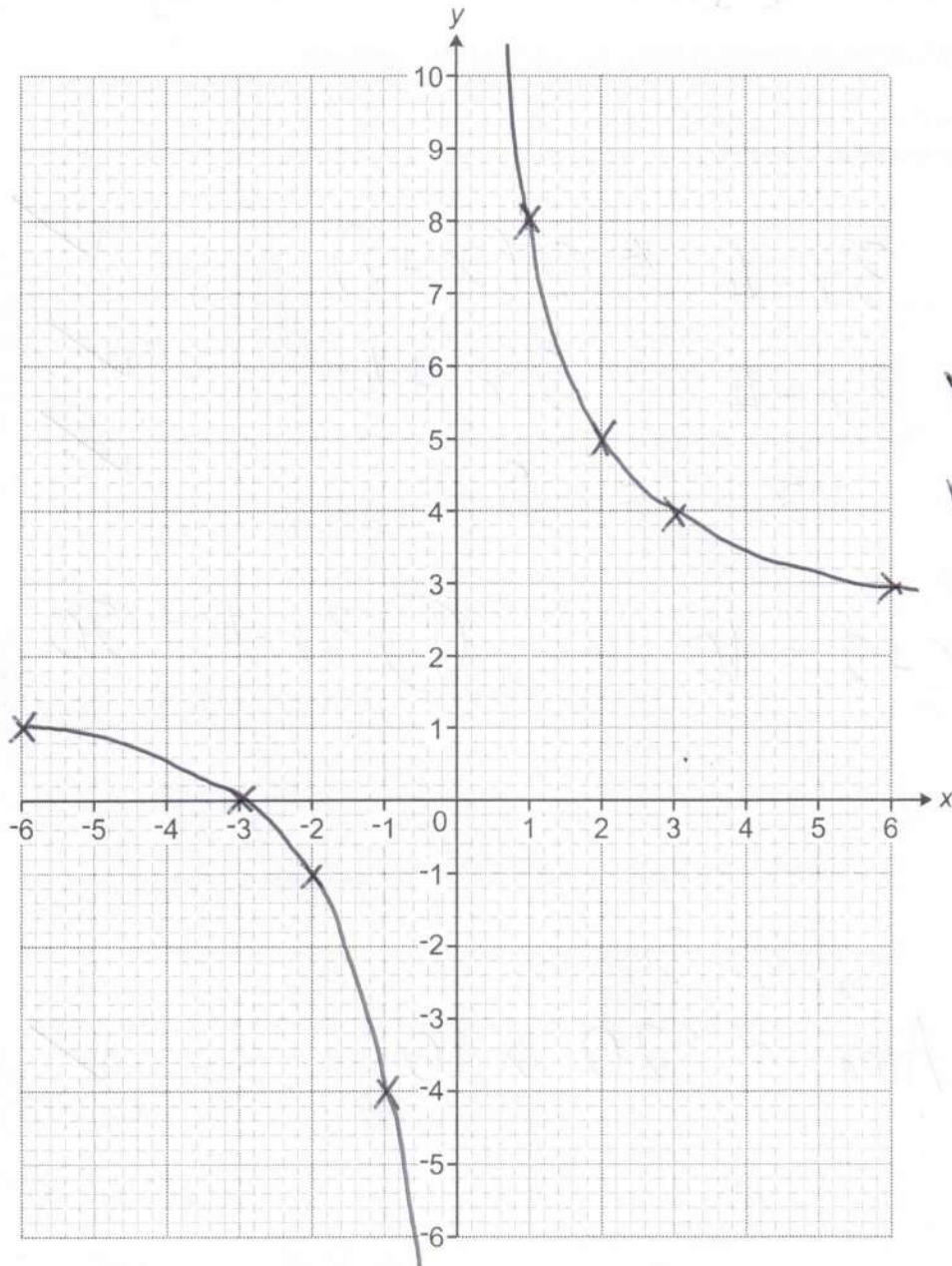
g

[3]

20 Here is a table of values for $y = \frac{6}{x} + 2$.

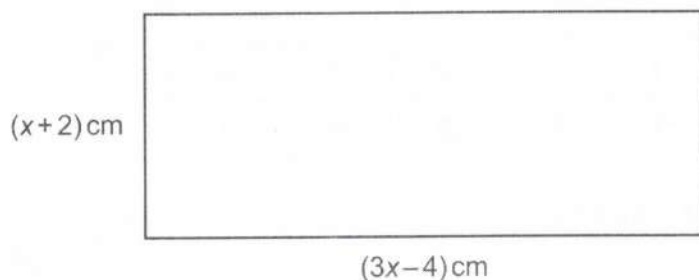
x	-6	-3	-2	-1	1	2	3	6
y	1	0	-1	-4	8	5	4	3

Draw the graph of $y = \frac{6}{x} + 2$ for $-6 \leq x \leq 6$, $x \neq 0$.



[3]

- 21 The diagram shows a rectangle with length $(3x - 4)$ cm and width $(x + 2)$ cm.



Not to scale

The length of the rectangle is twice the width of the rectangle.

Calculate the area of the rectangle.
You must show your working.

$$3x - 4 = 2(x + 2) \quad \checkmark$$

$$3x - 4 = 2x + 4 \quad \checkmark$$

$$x = 8 \quad \checkmark$$

$$\textcircled{W} \quad x + 2 = 10$$

$$\textcircled{L} \quad 3x - 4 = 20 \quad \checkmark$$

$$\text{Area} = 20 \times 10 \quad \checkmark$$

200

✓

..... cm² [6]

- 22 A teacher is planning a theme day for the 500 pupils at their school. The teacher asks a sample of 20 pupils from year 8 which theme they would prefer.

The results are shown in the table.

Theme	Number of pupils
Sport	7
Art and design	3
Recipes	2
Music and movies	8

- (a) Describe **two** disadvantages of the teacher's sampling method.

1. Sample is small ✓
2. Sample is restricted to a single year group ✓ [2]

- (b) Using the results from the table, the teacher estimates that 175 pupils in the school would prefer a sport theme.

Here is the teacher's method.

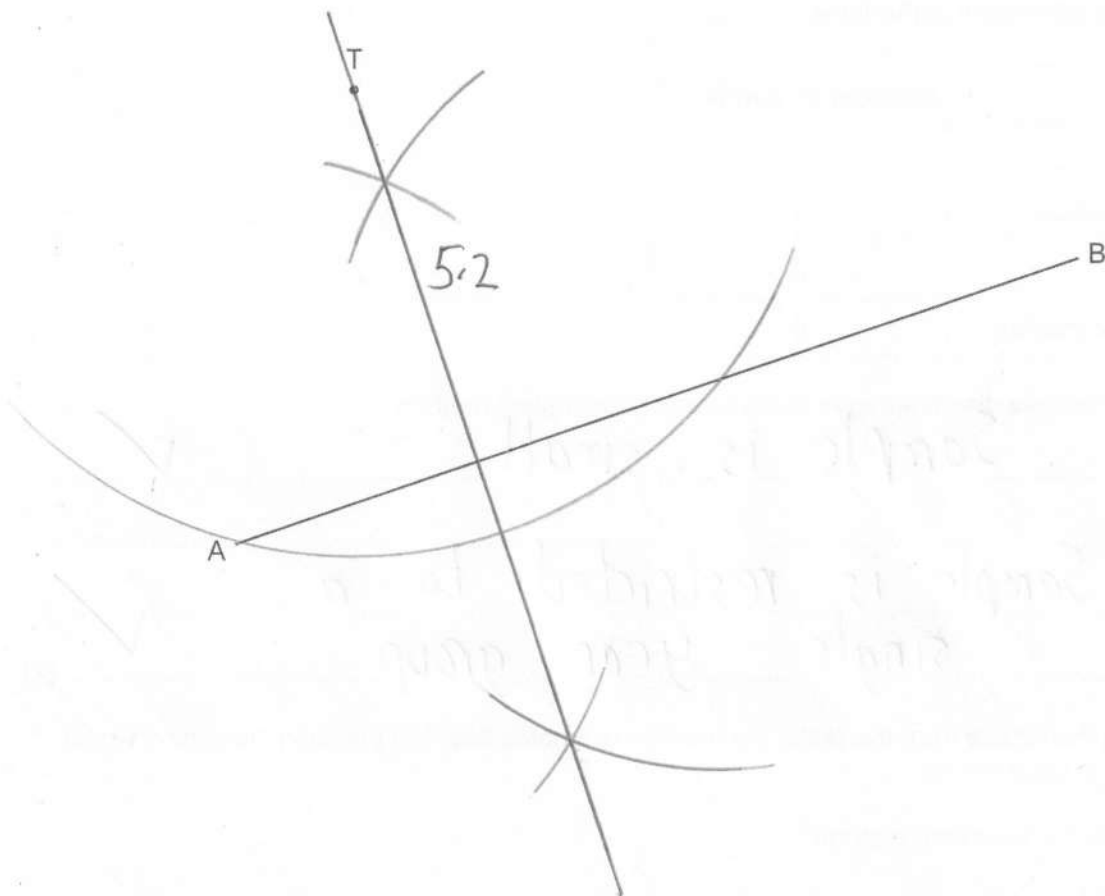
$$\frac{7}{20} \times 500 = 175$$

Write down **one** assumption the teacher has made when making their estimate.

- Sample is representative of whole school ✓ [1]

23 The diagram shows a town T and a straight road AB.

Scale: 2 cm represents 1 km



A new straight road is built from town T to the road AB.
The road is the shortest possible distance from town T to the road AB.

(a) Using ruler and compasses only, construct the road from town T to the road AB. [2]

(b) The new road costs £200 000 per kilometre to build.
The road constructor says

The new road will cost over £600 000 to build.

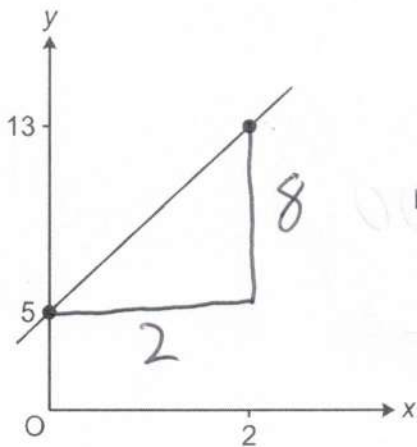
Show that the road constructor is incorrect.

$$5.2 \text{ cm} = 2.6 \text{ km} \quad \checkmark$$

$$2.6 \times 200000 = \pounds 520,000 \quad \checkmark \checkmark$$

[3]

- 24 A straight line passes through the points (0, 5) and (2, 13).



Not to scale

$$m = \frac{8}{2} = 4 \quad \checkmark \checkmark$$

Find the equation of the line in the form $y = mx + c$.

$$y = 4x + 5 \quad \checkmark$$

[4]

25 $2^7 \times 2^m = \frac{1}{2} = 2^{-1}$

Find the value of m .

$$7 + m = -1 \quad \checkmark$$

$$m = -1 - 7$$

$$m = -8 \quad \checkmark$$

[2]

Turn over for question 26

- 26 A triangle has sides of length 6 cm, 10 cm and 12 cm.

Is this a right-angled triangle?
Show how you decide.

$$6^2 + 10^2 = 36 + 100$$

$$= 136$$

$$12^2 = 144$$

NO

because

$$136 \neq 144$$

[4]

END OF QUESTION PAPER

OCR

Oxford Cambridge and RSA

Copyright Information

OCR is committed to seeking permission to reproduce all third-party content that it uses in its assessment materials. OCR has attempted to identify and contact all copyright holders whose work is used in this paper. To avoid the issue of disclosure of answer-related information to candidates, all copyright acknowledgements are reproduced in the OCR Copyright Acknowledgements Booklet. This is produced for each series of examinations and is freely available to download from our public website (www.ocr.org.uk) after the live examination series.

If OCR has unwittingly failed to correctly acknowledge or clear any third-party content in this assessment material, OCR will be happy to correct its mistake at the earliest possible opportunity.

For queries or further information please contact The OCR Copyright Team, The Triangle Building, Shaftesbury Road, Cambridge CB2 8EA.

OCR is part of Cambridge University Press & Assessment, which is itself a department of the University of Cambridge.