

Answer **all** questions in the spaces provided.

- 1 (a) A linear sequence starts

$$4 \quad +3 \quad 7 \quad +3 \quad 10 \quad +3 \quad 13 \quad +3$$

Write down the next number in this sequence.

[1 mark]

Answer

16

✓

- 1 (b) A different linear sequence starts

$$19 \quad -5 \quad 14 \quad -5 \quad 9 \quad -5 \quad 4 \quad -5$$

Write down the next number in this sequence.

[1 mark]

Answer

-1

✓

- 1 (c) Here is another sequence.

$$3 \quad \times 2 \quad 6 \quad \times 2 \quad 12 \quad \times 2 \quad 24$$

Write down the term-to-term rule for this sequence.

[1 mark]

Answer

48



2 Here is a price list.

Soap	£2.00
Candle	£4.55
Lip scrub	£1.75
Body cream	£3.80

x 3

2 (a) Work out the cost of three candles.

[1 mark]

Answer £

13.65



2 (b) Sal has £7.50

He wants to buy one soap and one body cream.

Does he have enough money to also buy one lip scrub?

Tick a box.

Yes

☐

No

☒

Show working to support your answer.

[2 marks]

$$2 + 1.75 + 3.80 = 7.55$$



3 (a) Solve $5x = 30$

[1 mark]

$$x = 30 \div 5$$

$$x = 6 \quad \checkmark$$

3 (b) Solve $-2 + y = 10$

[1 mark]

$$y = 10 + 2$$

$$y = 12 \quad \checkmark$$

3 (c) Simplify fully

$$\frac{20}{4}$$

[2 marks]

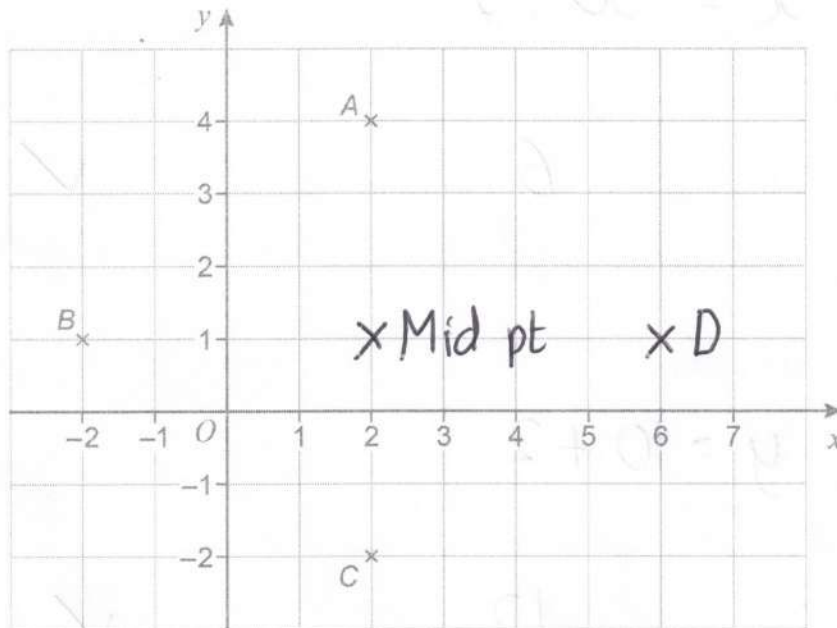
$$20 \div 4 = 5$$

$$\text{Answer } 5 \quad \checkmark \checkmark$$

(✓ = partial)



- 4 Points A, B and C are plotted on a grid.



- 4 (a) Write down the coordinates of C.

[1 mark]

Answer (2 , -2)



- 4 (b) Write down the coordinates of the midpoint of AC.

[1 mark]

Answer (2 , 1)



- 4 (c) Plot point D on the grid so that ABCD is a rhombus.

[1 mark]



5 Here are five numbers.

14.2

15.1

16.5

16.7

18.0

5 (a) Work out the range.

[1 mark]

$$18 - 14.2$$

$$3.8$$

Answer

5 (b) Work out the mean.

[2 marks]

$$14.2 + 15.1 + 16.5 + 16.7 + 18$$

$$= 80.5$$

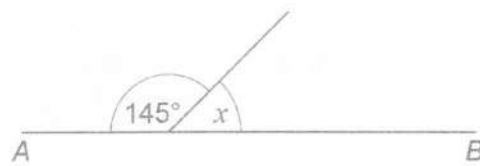
$$80.5 \div 5$$

Answer

$$16.1$$



- 6 (a) AB is a straight line.



Not drawn
accurately

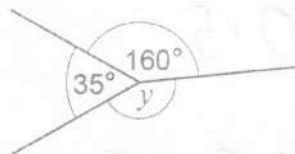
Work out the size of angle x .

[1 mark]

$$180 - 145$$

$$x = 35$$

- 6 (b)



Not drawn
accurately

Work out the size of angle y .

[2 marks]

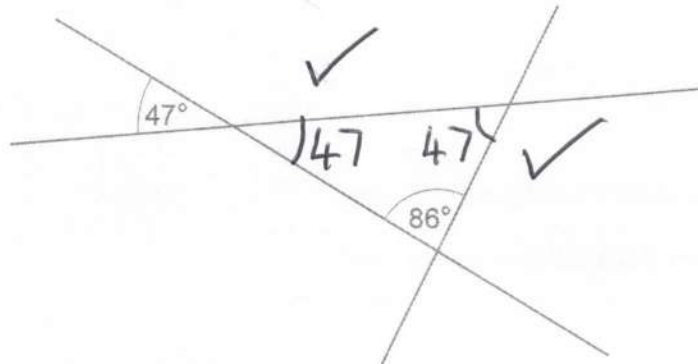
$$360 - 160 - 35$$

$$y = 165$$



- 6 (c) Three straight lines intersect as shown.

Not drawn
accurately



What type of triangle is made?

You **must** show your working.

[3 marks]

$$180 - 47 - 86 = 47$$

2 angles the same

Answer

isosceles ✓



7

The table shows information about the packs of juice a family has.

Do not write
outside the
box

Number of packs	Number of cartons in a pack	
5	X	8
16	X	3

$$= 40$$

$$= 48$$

$$= 88 \checkmark$$

The family drinks 4 cartons of juice each day.

In total, how many days will their packs last?

[3 marks]

$$88 \div 4$$



Answer

22

days



Turn over for the next question

Turn over ►



- 8 100 people voted in an election for Jo, Kim or Liam.
The pictogram shows the results for Jo and Kim.

Key: ○ represents 8 people

Jo	○ ○ ○ ○ ○ ○ ○
Kim	○ ○ ○ ○ ◐
Liam	○○

Complete the pictogram.

[3 marks]

$$J = 6 \times 8 = 48$$

$$K = 4 \times 8 + 4 = 36$$

$$L = 100 - 48 - 36 = 16$$



9

Callum is making pizza.

He can choose three **different** toppings from

- ham (H)
- sweetcorn (S)
- onion (O)
- mushrooms (M).

List **all** the possible options for the three toppings.

The first one has been done for you.

[2 marks]

HSO
HSM
HOM
SOM

[✓ any 1]

Turn over for the next question



- 10 (a) Write $\frac{3}{8}$ as a percentage.

$\times 100$

[1 mark]

Answer 37.5 %



- 10 (b) Work out $\frac{15}{32}$ as a decimal.

Give your answer to 2 decimal places.

$15 \div 32 = 0.46875$

[2 marks]

Answer 0.47



- 11 Tick **one** box for each statement.

[3 marks]

If a number is > 0 the number is positive

True

☒

May be true

☐

Not true

☐


If a number is ≤ 3 the number is 1

☐
☒
☐


If a number is ≥ 5 the **smallest** possible value of the number is 5

☒
☐
☐


- 12 (a) Work out the value of $x^2 + 7x$ when $x = -4$

[2 marks]

$$= (-4)^2 + 7(-4)$$

$$= 16 - 28$$

✓ either

Answer -12

✓

- 12 (b) Rearrange $y = w - 1$ to make w the subject.

[1 mark]

$$w = y + 1$$

✓

- 12 (c) Simplify fully $4(a + 2) + a$

[2 marks]

$$\underline{4a + 8} + a$$

✓

Answer $5a + 8$

✓



13

The time Shaz takes to run a race is 1 minute 28 seconds **less** than 2 hours.

Work out her time in hours, minutes and seconds.

[2 marks]

$$2\text{hrs} - 1\text{min} = 1\text{hr } 59\text{mins}$$

$$59\text{mins} = 58\text{mins } 60\text{secs}$$

Answer 1 hour 58 minutes 32 seconds ✓✓

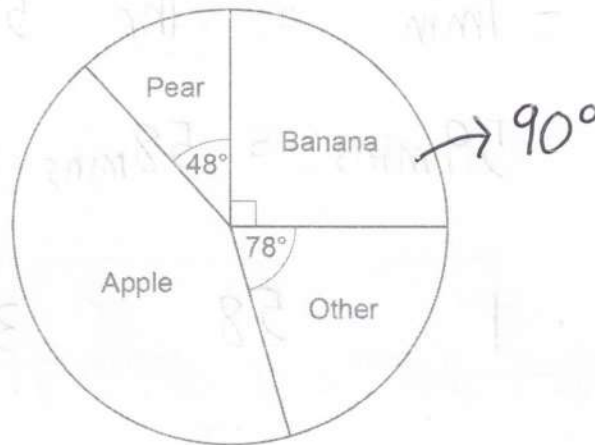
(✓ any 2
values)



14

Some people were asked to choose their favourite fruit.

The pie chart shows information about the results.

Not drawn
accurately

120 people chose Banana.

How many people chose Apple?

[4 marks]

$$\begin{aligned} \text{Apple} &= 360 - 90 - 78 - 48 \\ &= \underline{144}^\circ \end{aligned}$$

✓

$$\text{Total} = 120 \times 4 = \underline{480}$$

✓

$$\frac{144}{360} \times 480$$

✓

Answer

192

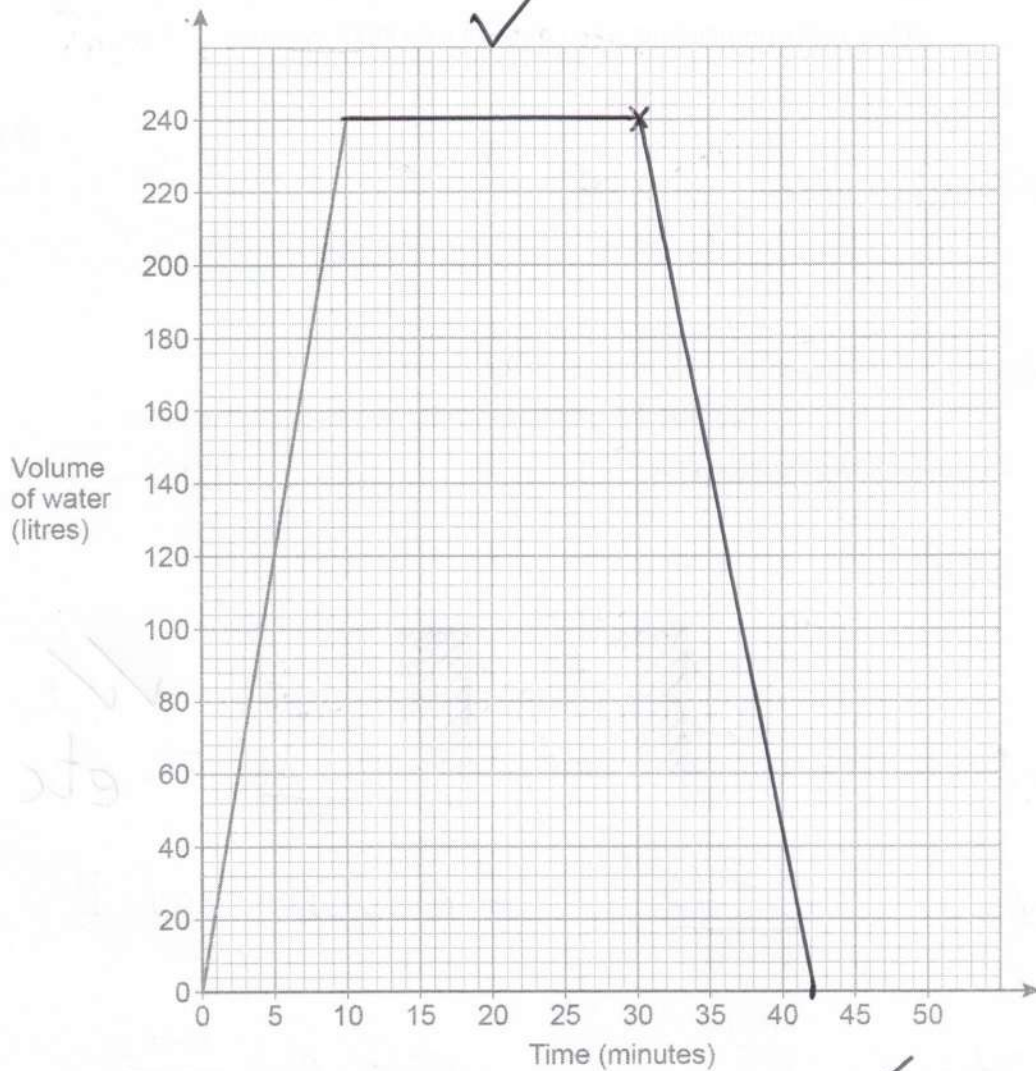
✓



15

The graph represents the volume of water in a bath.

The bath is full after 10 minutes.



15 (a)

Work out the rate at which the bath is filled.

State the units of your answer.

[2 marks]



$$240 \div 10 = 24 \text{ litres/min}$$

Answer

24 l/min



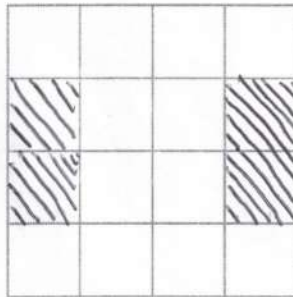
- 15 (b) After the bath is full,
the volume of water stays constant for 20 minutes
then
all the water empties out at a constant rate in 12 minutes.

Show this information on the graph.

[2 marks]

- 16 In the grid below, shade **one quarter** of the squares
so that the grid has exactly **two** lines of symmetry.
Shade complete squares only.

[2 marks]



✓✓
etc

Turn over for the next question



17

A map has a scale of 1 : 4000

On the map, the distance from a station to a museum is 7 cm

Is the **actual** distance from the station to the museum **more** than 300 m?

Tick a box.

Yes

☐

No

☒

Show working to support your answer.

[3 marks]

$$7\text{cm} \times 4000 = 28000\text{cm}$$

✓

$$28000 \div 100 = 280\text{m}$$

✓

$$280 < 300$$

and no

✓

18

 X is inversely proportional to Y .

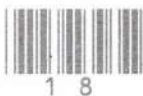
Circle the correct statement.

[1 mark]

$$X = \frac{1}{Y} \quad \text{so} \quad Y = \frac{1}{X}$$

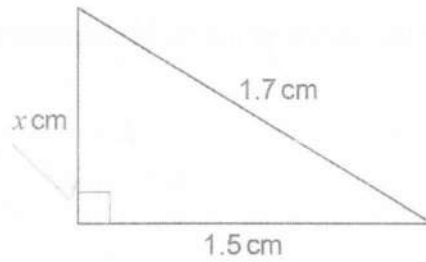
 X is directly proportional to Y X is directly proportional to $\frac{1}{Y}$

✓

 X is directly proportional to $2Y$ X is directly proportional to \sqrt{Y} 

19

Here is a right-angled triangle.

Not drawn
accuratelyUse Pythagoras' theorem to show that $x = 0.8$

[2 marks]

$$x = \sqrt{1.7^2 - 1.5^2}$$

$$x = \sqrt{0.64} = 0.8$$

Turn over for the next question



20

Beth and Lynn each spin the same biased coin a number of times.
The table shows information about the results.

	Beth	Lynn
Number of spins	125	80
Relative frequency of Heads	0.32	0.35

20 (a) How many **more** Heads did Beth spin than Lynn?

[2 marks]

$$B = 125 \times 0.32 = 40$$

$$L = 80 \times 0.35 = 28$$

✓ either

Answer

12

✓

20 (b) Lynn says,

"My estimate of the probability of the coin landing on Heads must be the best,
because 0.35 is greater than 0.32"

Is she correct?

Tick a box.

Yes

☐

No

☒

Give a reason for your answer.

[1 mark]

Lynn did fewer spins



21

Some oil has

a mass of 537 g

a density of 895 000 g/m³1 m³ = 1000 litresD M
D (V)

Work out the volume of the oil.

Give your answer in litres.

[2 marks]

$$V = \frac{M}{D} = \frac{537}{895000 \div 1000}$$

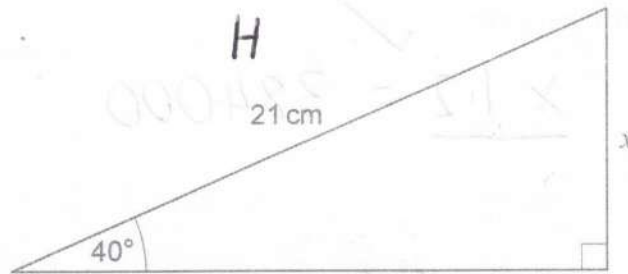
$$= \frac{3}{5}$$

✓
✓Answer or 0.6 litres

Turn over for the next question



22

Use trigonometry to work out the value of x .Not drawn
accuratelyS^o_H

[3 marks]

$$x = \sin 40^\circ \times 21$$

$$= 13.4985...$$

Answer

13.5

cm

23

The length of a wall is 9 metres to the nearest metre.

Complete the error interval for the length of the wall.

$$\pm \frac{1}{2} \text{ m}$$

[2 marks]

Answer

8.5

m \leq length $<$

9.5

m

or 9.49



24

384 000 electric cars were sold this year.

This is 20% **more** than last year.How many were sold **last year**?

[3 marks]

$$x \times 1.2 = 384000$$

$$\text{so } x = 384000 \div 1.2$$

$$\text{Answer } 320000$$

25

Here are three terms.

 xy x^2 $5y^2$

Alec multiplies two of these terms.

Work out the **three** possible fully simplified answers.

[3 marks]

$$xy \times x^2$$

$$xy \times 5y^2$$

$$x^2 \times 5y^2$$

Answer

$$x^3y$$

Answer

$$5xy^3$$

Answer

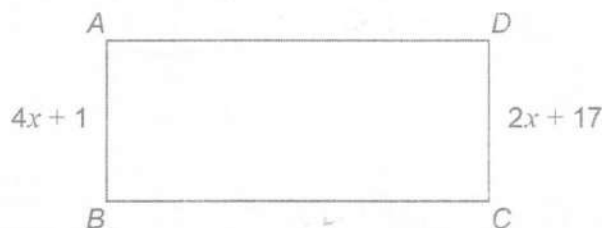
$$5x^2y^2$$



26

Here is a rectangle.

All measurements are in centimetres.

Not drawn
accurately

$$AB : BC = 1 : 3$$

Work out the value of the area.

[5 marks]

$$4x + 1 = 2x + 17$$

$$2x = 16$$

$$x = 8$$

$$AB = 4 \times 8 + 1$$

$$= 32 + 1 = 33$$

$$BC = 33 \times 3 = 99$$

$$\text{Area} = 99 \times 33$$

Answer 3267 cm²

END OF QUESTIONS

