

Answer all the questions.

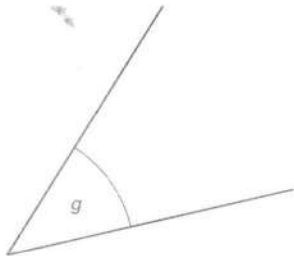
- 1 (a) Write down the mathematical name of this type of angle. Choose from the list in the box.

acute    reflex    obtuse    right angle



(a) obtuse ✓ [1]

- (b) Measure angle g.



(b) 45 ✓ [1]

[+2]

- 2 (a) Write 6:14 as a ratio in its simplest form.

(a) 3:7 ✓ [1]

- (b) The ratio 20:50 can be written in the form 1:n. Find the value of n.

2:5 ✓

(b) n = 2.5 ✓ [2]

- 3 Insert brackets to make each of these calculations correct.

$5 \times (3 - 1) = 10$

$(3 + 6 - 2) \div 2 = 3.5$

✓  
✓ [2]

- 4 Work out 20% of 40.

10% = 4

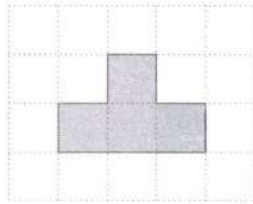
✓

8 ✓

..... [2]

OCR-F Jun'19 P3

5 A shape is drawn on a one-centimetre grid.



(a) Find the perimeter of the shape.

(a) ..... 10 ..... cm [1] ✓

(b) How many lines of symmetry does the shape have?

(b) ..... 1 ..... [1] ✓

6 (a) These are the first five multiples of 15.

15 30 45 60 75

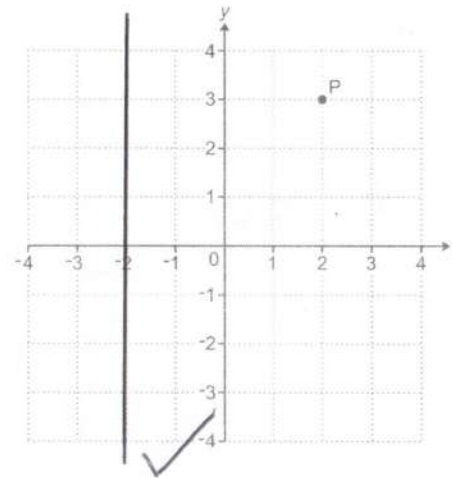
Write down the first five multiples of 30.

(a) ..... 30 60 90 120 150 ..... [2] ✓  
 ✓4  
 ✓✓All

(b) Write down the lowest common multiple (LCM) of 15 and 30.

(b) ..... 30 ..... [1] ✓

7 Point P is shown on this grid.



(a) Write down the coordinates of point P.

(a) ..... 2 3 ..... [1] ✓

(b) Draw the line  $x = -2$  on the grid.

8 Find the value of  $3g - h$  when  $g = 4$  and  $h = 5$ .

$3 \times 4 - 5$   
 $= 12 - 5$   
 $= 7$  ✓ [2]

9 Here are the first three patterns in a sequence.

Pattern 1



Pattern 2

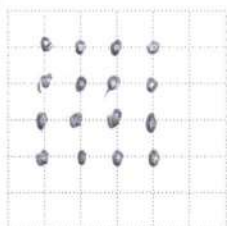


Pattern 3



(a) Draw Pattern 4 in the sequence.

Pattern 4



[1]

(b) Without drawing it, work out how many dots there are in Pattern 8.  
Explain how you decide.



64

8x8



..... dots because .....

.....

..... [2]

(c) Pattern  $n$  has 196 dots.

Find the value of  $n$ .

$$\sqrt{196}$$

14



(c)  $n =$  ..... [1]

- 10 The pie chart shows how Jack spent his time one evening.



- (a) On which activity did Jack spend most time?

Gaming

(a) ..... [1]

- (b) Jack says

I spent  $\frac{1}{3}$  of my time on Gaming.

Show that he is not correct.

$$\frac{150}{360} = \frac{5}{12} \neq \frac{1}{3} \quad \checkmark \checkmark$$

..... [2]

- (c) The pie chart represents 5 hours. = 300m

Find the time, in hours and minutes, that Jack spent reading.

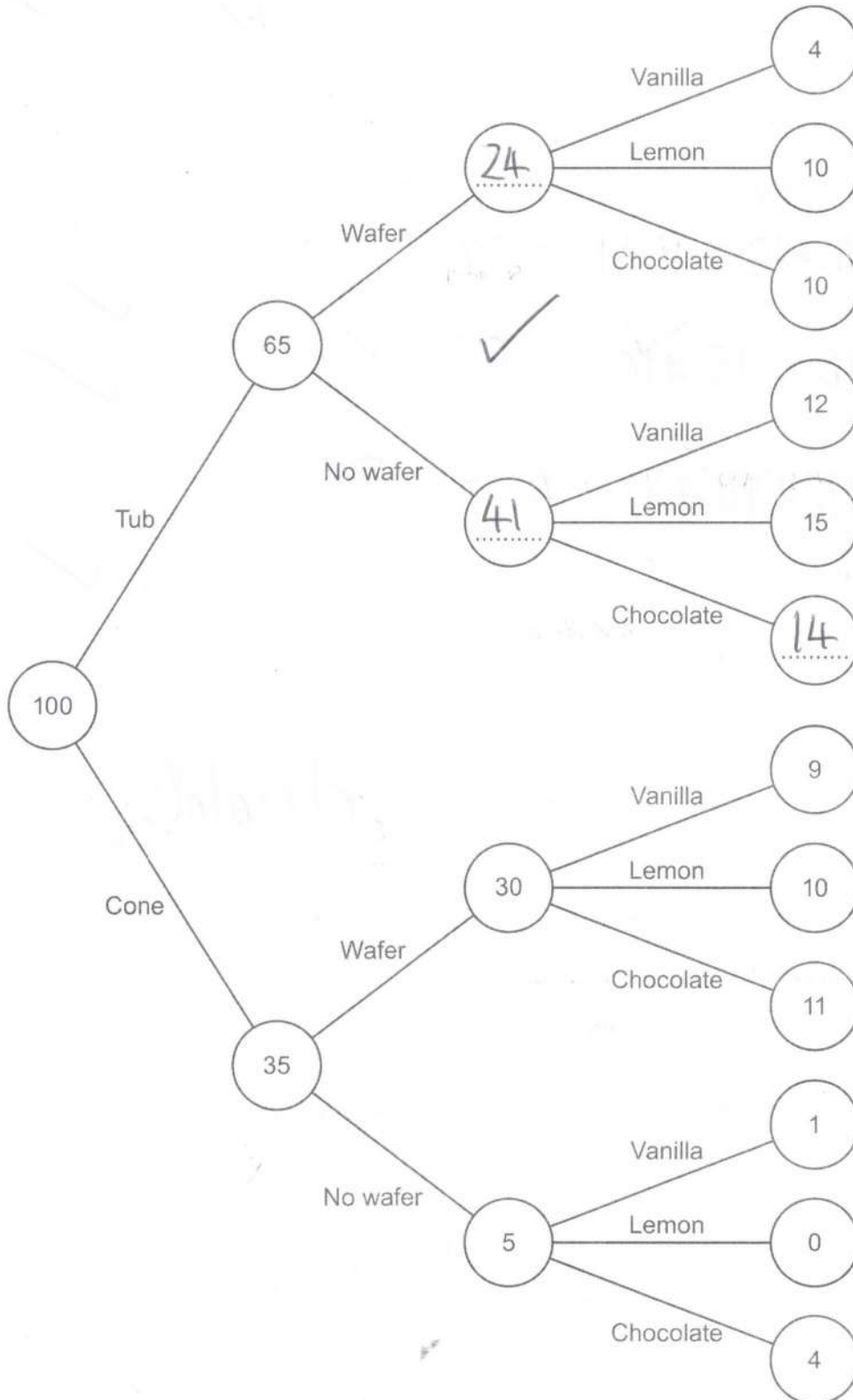
$$\checkmark 360 - 150 - 90 - 30 = 90^\circ = \frac{1}{4} \quad \checkmark$$

$$300 \div 4 = 75 \text{ mins} \quad \checkmark$$

(c) 1 h 15 min [4]

- 11 Megan's Cafe sells ice cream. Customers choose to have a tub or a cone, and a wafer or no wafer. They can choose vanilla, lemon or chocolate ice cream.

This frequency tree shows the number of people making some of the choices.



- (a) Anaya buys an ice cream.

One choice she can make is

a cone, no wafer and vanilla.

How many different choices can she make?

(a) ..... 12 ..... [1] ✓

- (b) Complete the frequency tree. [2]

- (c) Which flavour of ice cream was most popular?  
Show how you decide.

$$V = 4 + 12 + 9 + 1 = 26$$

$$L = 10 + 15 + 10 = 35$$

$$C = 10 + 14 + 11 + 4 = 39$$

(c) ..... chocolate ..... [3] ✓

12 Solve.

$$4x + 5 = 35$$

$$4x = 30 \checkmark$$

$$30 \div 4$$

$$x = \dots\dots\dots 7.5 \quad \checkmark \text{OE} \quad [2]$$

- 13 Delroy drives 240 miles.  
His car averages 40 miles per gallon of petrol.  
Petrol costs £1.30 per litre.

1 gallon is 4.5 litres.

How much does Delroy spend on petrol for this journey?

$$\frac{240}{40} = 6g \quad \checkmark$$

$$6 \times 4.5 \times 1.3 \quad \checkmark \checkmark$$

$$£ \dots\dots\dots 35.10 \quad \checkmark \quad [4]$$

- 14 Joan makes cups of tea and coffee at a lunch club.

Each cup requires 250 ml of boiling water.

She has a kettle that boils up to 1.7 litres of water each time.

$$= 1700 \text{ ml}$$

She boils 10 litres of water in an urn.

$$= 10000 \text{ ml}$$

She then uses the kettle to boil the rest of the water she needs.

Find the least number of times that Joan needs to boil the kettle to make 56 cups.

Show how you decide.

$$56 \times 250 = 14000 \text{ ml} \quad \checkmark$$

$$14000 - 10000 = 4000 \text{ ml} \quad \checkmark$$

$$\checkmark \quad \frac{4000}{1700} = 2.35 \dots = 3 \text{ boils}$$

3  $\checkmark$

..... [5]

- 15 (a) 50 sweets weigh 200g.

If each sweet weighs the same, work out the weight of 7 sweets.

$$\frac{200}{50} = 4\text{g/sweet}$$



$$7 \times 4 =$$

=

28



(a) .....g [2]

- (b)  $b$  is directly proportional to  $a$ .  
 $b$  is 10 when  $a$  is 8.

Work out  $b$  when  $a$  is 9.

$$b = k \times a$$

$$k = \frac{10}{8} = 1.25$$

$$b = 9 \times 1.25$$

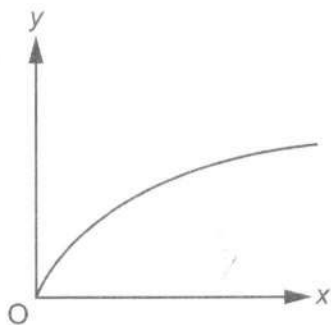


11.25



(b)  $b =$  ..... [2]

- (c) A graph is drawn below.



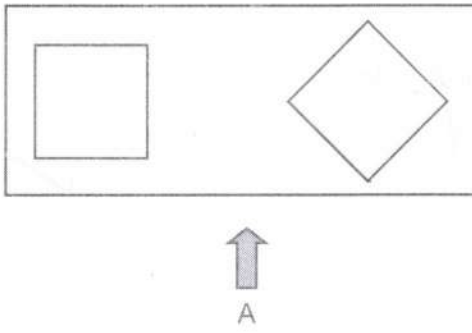
Explain how you know that  $y$  is not directly proportional to  $x$ .

Not linear

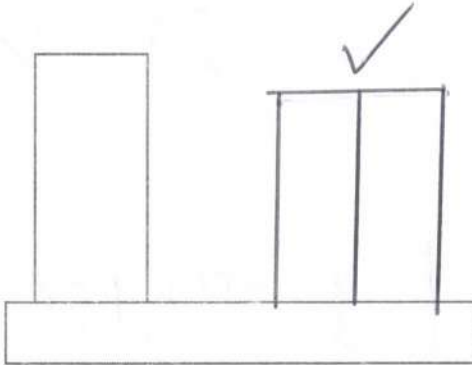


[1]

16 This is the plan view of a 3D object.



Complete the diagram below to show the front view of the 3D object from A.



[2]

- 17 A grain of salt weighs  $6.48 \times 10^{-5}$  kg on average.  
A packet contains 0.35 kg of salt.

(a) Use this information to calculate the number of grains of salt in the packet.

$$0.35 \div (6.48 \times 10^{-5})$$



5401



(a) ..... [2]

- (b) Explain why your answer to part (a) is unlikely to be the actual number of grains of salt in the packet.

Average weight given/used, most actual weights will differ



..... [1]

18 Tom researches the weights of plant seeds.

- One poppy seed weighs  $3 \times 10^{-4}$  grams.
- 250 pumpkin seeds weigh 21 grams.
- One sesame seed weighs  $3.64 \times 10^{-6}$  kilograms. *so x1000*

Write the three types of seed in order according to the weight of one seed.

Write the lightest type of seed first.

You must show how you decide.

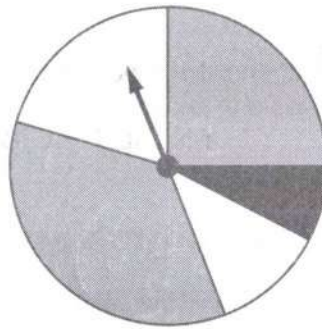
$$\text{poppy} = 0.0003 \text{ g} \quad \checkmark$$

$$\text{pumpkin} = 21 \div 250 = 0.084 \text{ g} \quad \checkmark$$

$$\text{sesame} = 0.00364 \text{ g} \quad \checkmark$$

poppy      sesame      pumpkin [4]  
 .....  
 lightest

19 (a) This spinner has two grey sections, two white sections and one black section.



Vlad says

The probability of the spinner landing on black is  $\frac{1}{5}$ .

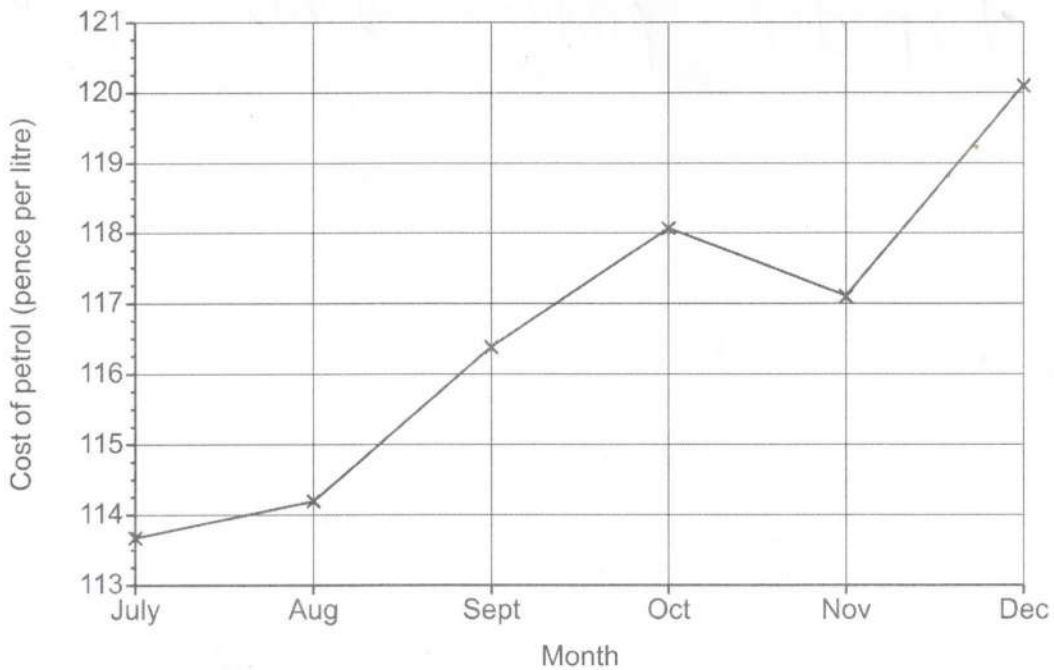
Explain why Vlad is not correct.

black  $< 72^\circ$



[1]

(b) The graph shows the cost of a litre of petrol for the last six months of 2017.



Explain why this graph is misleading.

y-axis doesn't start at 0



[1]

20 Sophie is organising a raffle.

- Each raffle ticket costs 50p.
- She sells 400 tickets.
- The probability that a ticket, chosen at random, wins a prize is 0.1.
- Each winning ticket receives a prize worth £3.

Sophie says

I expect the raffle to make over £100 profit.

Show that Sophie is wrong.

$$400 \times 50 = 20000 \text{ p} = \pounds 200 \quad \checkmark$$

$$400 \times 0.1 \times 3 = \pounds 120 \quad \checkmark \checkmark$$

$$\text{Expected profit} = \pounds 80 \quad \checkmark$$

[4]

21 A bag contains some counters.

- There are 300 counters in the bag.
- There are only red, white and blue counters in the bag.
- The probability of picking a blue counter is  $\frac{23}{50}$ .
- The ratio of red counters to white counters is 2 : 1.

Calculate the number of red counters in the bag.

300

R

W

$$\frac{23}{50} = \frac{138}{300} \checkmark$$



$$300 - 138$$

$$= 162 \quad \checkmark$$

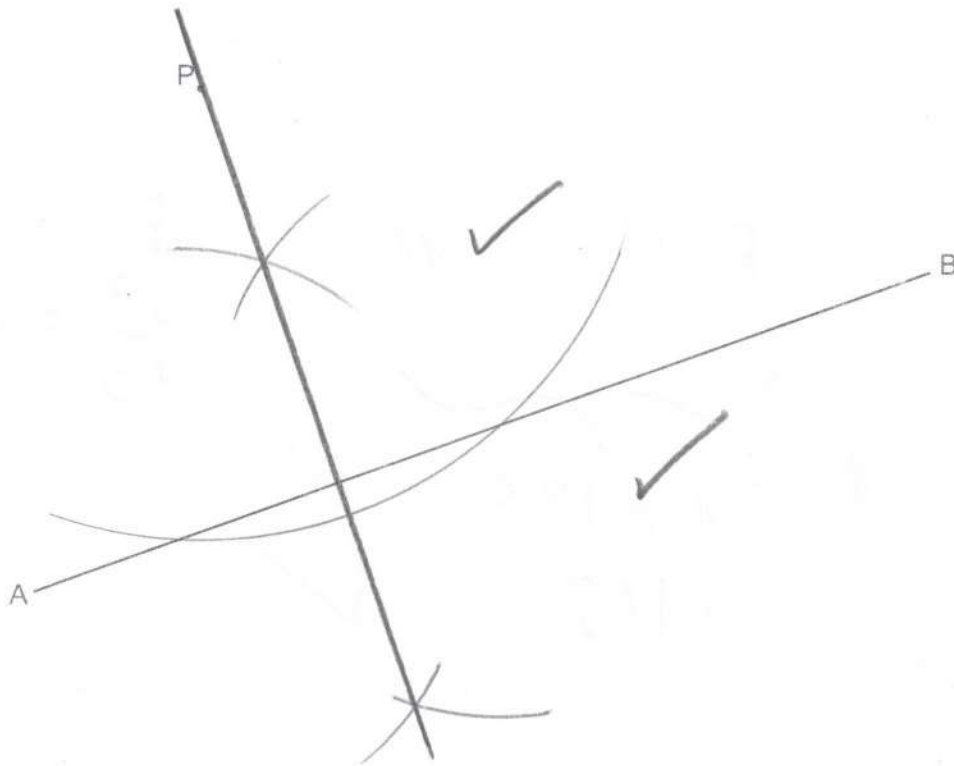
$$R = \frac{2}{3} \times 162 \quad \checkmark$$

108

✓

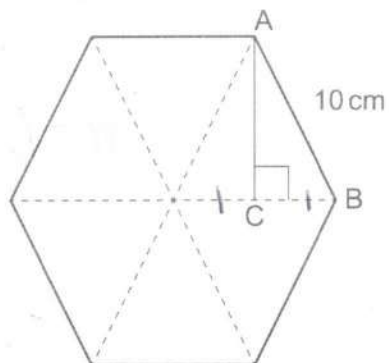
..... [4]

- 22 Construct the perpendicular from the point P to the line AB.  
Show all of your construction lines.



[2]

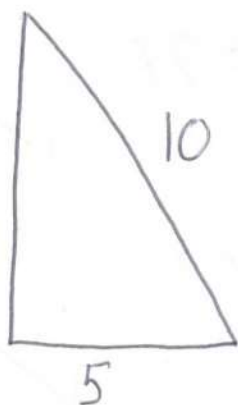
- 23 The diagram shows a regular hexagon made from six equilateral triangles. Each side is 10 cm. The angle ACB is a right angle.



Not to scale

- (a) Show that  $AC = 8.66$  cm, correct to 3 significant figures.

[4]



$$\begin{aligned}
 AC &= \sqrt{10^2 - 5^2} \quad \checkmark \\
 &= \sqrt{75} \\
 &= 8.6602\dots = 8.66 \quad \checkmark
 \end{aligned}$$

- (b) (i) Show that the area of triangle ACB is  $21.7$  cm<sup>2</sup>, correct to 3 significant figures.

[2]

$$\frac{1}{2} \times 5 \times 8.66$$

$$= 21.65 \quad \checkmark$$

$$= 21.7 \quad \checkmark$$

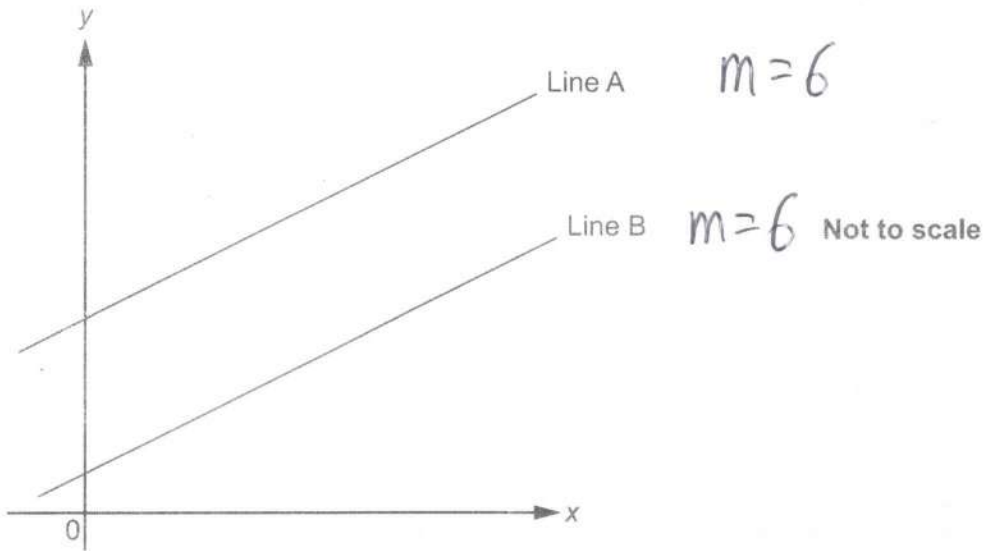
- (ii) Find the area of the hexagon, giving your answer to an appropriate degree of accuracy.

$$21.7 \times 12 \quad \checkmark = 260.4$$

$$= 260 \quad \checkmark$$

(ii) ..... cm<sup>2</sup> [2]

- 24 The graph shows two parallel lines, Line A and Line B.



Line A has equation  $y = 6x + 7$ .

Line B passes through the point  $(4, 26)$ .

Find the equation of Line B.

$$y = mx + c$$

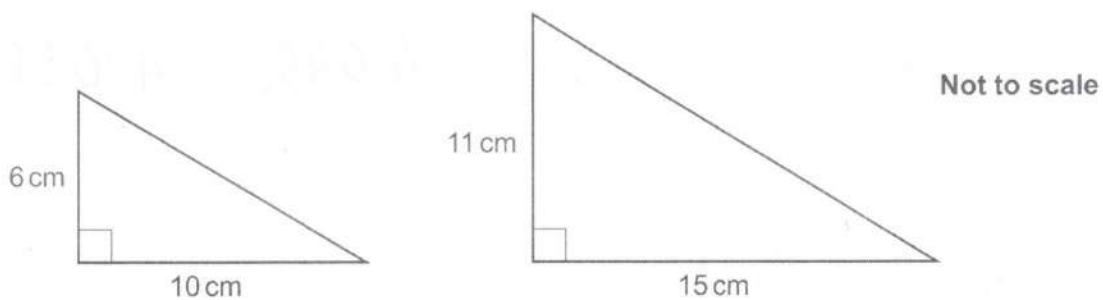
$$26 = 6 \times 4 + c$$

$$2 = c$$

$$y = 6x + 2$$

[4]

- 25 Are these two triangles mathematically similar?  
Show how you decide.



$$15 \div 10 = 1.5$$

$$11 \div 6 = 1.8\bar{3}$$

No

because

the scale factors  
are different

[3]

- 26 (a) A number,  $g$ , is given as 4.05, correct to 2 decimal places.

Complete the error interval for  $g$ .

$$(a) \quad \overset{\checkmark}{4.045} \leq g < \overset{\checkmark}{4.055} \quad [2]$$

- (b) A number,  $h$ , is given as 3, truncated to 1 significant figure.

Complete the error interval for  $h$ .

$$(b) \quad 3 \leq h < \overset{4}{\quad} \quad [1]$$

- 27 Solve by factorising.

$$x^2 + 3x - 10 = 0$$

$$(x+5)(x-2) \quad \checkmark\checkmark$$

$$x = -5 \quad \text{or} \quad x = 2 \quad \checkmark \quad [3]$$

Turn over for question 28

28 (a) Simplify.

(i)  $h^3 \times h^{-3}$

$h^0$  or 1 ✓

(a) (i) ..... [1]

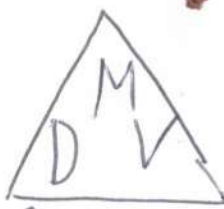
(ii)  $\frac{f^9}{f^3}$

$f^6$  ✓

(ii) ..... [1]

- (b) The length of each side of a plastic cube is  $2a$  millimetres.  
The cube has mass  $32a^2$  grams.

Find an expression for the density of the cube in its simplest form.  
Give the units of your answer.

$$D = \frac{M}{V} = \frac{32a^2}{2a \times 2a \times 2a}$$


$$= \frac{32 \cancel{a} \cancel{a}}{8 \cancel{a} \cancel{a} \cancel{a}}$$

$\frac{4}{a}$  ✓

(b) density = ..... [5]

units  $g/mm^3$  ✓

END OF QUESTION PAPER

**OCR**

Oxford Cambridge and RSA

**Copyright Information**

OCR is committed to seeking permission to reproduce all third-party content that it uses in its assessment materials. OCR has attempted to identify and contact all copyright holders whose work is used in this paper. To avoid the issue of disclosure of answer-related information to candidates, all copyright acknowledgements are reproduced in the OCR Copyright Acknowledgements Booklet. This is produced for each series of examinations and is freely available to download from our public website ([www.ocr.org.uk](http://www.ocr.org.uk)) after the live examination series.

If OCR has unwittingly failed to correctly acknowledge or clear any third-party content in this assessment material, OCR will be happy to correct its mistake at the earliest possible opportunity.

For queries or further information please contact The OCR Copyright Team, The Triangle Building, Shaftesbury Road, Cambridge CB2 8EA.

OCR is part of the Cambridge Assessment Group; Cambridge Assessment is the brand name of University of Cambridge Local Examinations Syndicate (UCLES), which is itself a department of the University of Cambridge.